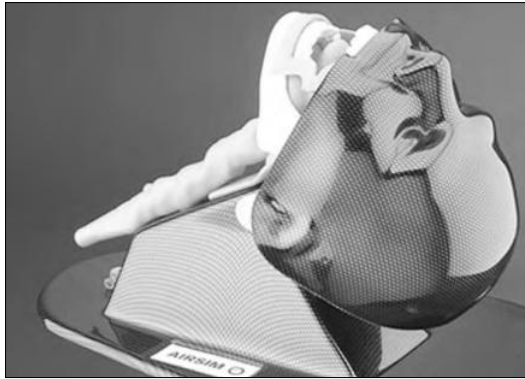


Trainers

The AirSim Standard is uniquely constructed to allow realistic feedback during airway management procedures and provides true, anatomically correct and visually accurate internal features.

The novel neck construction allows the head to be moved and secured in a number of positions. This ranges from the standard "sniffing" position to more difficult scenarios.



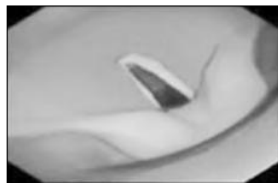
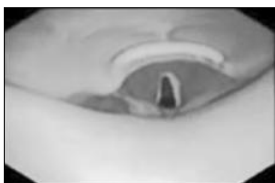
The AirSim Standard also features an inflatable tongue with real-life size and texture. There is also an option to include "breakout" teeth to simulate the effects of bad practice in laryngoscopy.

The AirSim Standard is ideal for training in the use of:

- Laryngeal Masks
- Full range of supraglottic devices
- Laryngoscopes
- Tracheal Tubes
- Fiberoptic Laryngoscopes
- Needle Cricothyroidotomy Systems

TruCorp recommend the following equipment sizes for optimal performance:

- 8.0-9.0 mm ID for oral intubation
- Size 3 and 4 for LMA laryngeal masks (similar respective sizes for other supraglottic devices)



Internal views of the AirSim Standard

- #EU-AA10000 AirSim Standard (shown)
- #EU-AA10001 AirSim with breakout teeth
- #EU-AA10010 AirSim with needle access
- #EU-AA10011 AirSim with needle access and breakout teeth

Laerdal® Airway Management Trainer

The skills trainer for adult airway management training

Realistic practice is the key to developing proficiency in airway management skills. The Laerdal Airway Management Trainer's lifelike upper torso and head simulates real-world complications when practicing a variety of intubation, ventilation and suction techniques.



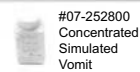
#07-2500033 Laerdal Airway Management Trainer

Laerdal Airway Management Trainer Includes: Manikin on Sturdy Board, Airway Demonstration Model, Cleaning Kit, Airway Lubricant, Carry Case and Directions for Use.

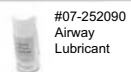
Consumables



#07-252500
Airway
Demonstration
Model



#07-252800
Concentrated
Simulated
Vomit



#07-252090
Airway
Lubricant

Laerdal® Infant Airway Management Trainer

The most realistic tool for practicing the specialized skills required for infant airway management

Realistic practice is the key to developing proficiency in airway management skills. The Laerdal Infant Airway Management Trainer provides the realistic anatomy of a three-month-old infant for teaching and practicing basic and advanced airway management skills.



#07-250-00250 Laerdal Infant Airway Management Trainer

Laerdal Infant Airway Management Trainer Includes: Infant Trainer, Airway Lubricant and Directions for Use.

Consumables

#07-252090
Airway Lubricant (180ml)
#07-250-21050
Airway Lubricant (45ml)
(not shown)

Deluxe Difficult Airway Trainer

Management of the obstructed airway

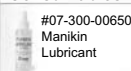
The Deluxe Difficult Airway Trainer features a manually inflatable tongue to simulate an obstructed airway and is designed for training the management of difficult airways.



#07-261-10001 Deluxe Difficult Airway Trainer

Deluxe Difficult Airway Trainer Includes: Airway Torso, 6 Neck Skin Collars, 1 Roll Cricothyroid Membrane Tape and Manikin Lubricant.

Consumables



#07-300-00650
Manikin
Lubricant



#07-381105
Neck Skins
(pkg. 6)



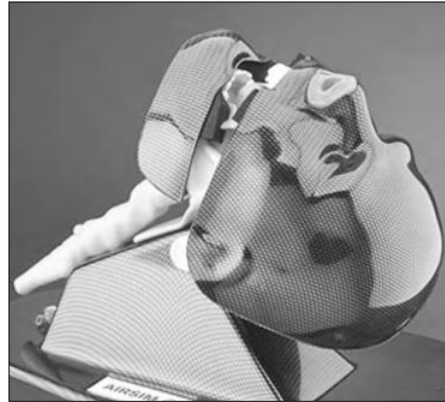
#07-200-00250
Cricothyroid
Membrane Tape
(1 roll)

Trainers

AirSim Multi

The AirSim Multi contains the key features of the AirSim Standard with the addition of a nasal passage and a chin.

The AirSim Multi facilitates training on nasal procedures as well as bag and mask ventilation techniques.



Internal view of the AirSim Multi Nasal



AirSim Multi	#EU-AA11100	Nasal Passage, Chin
AirSim Multi	#EU-AA11101	Nasal Passage, Chin, Breakout Teeth
AirSim Multi	#EU-AA11110	Nasal Passage, Chin, Needle Access
AirSim Multi	#EU-AA11111	Chin, Needle access, Breakout Teeth

The nasal passage has been developed in a manner similar to the main airway. This gives the same anatomical realism and functionality, important landmarks such as the turbinates are clearly defined. In addition, the material used offers the same tactile feedback which is delivered with the main airway itself.

These features allow AirSim Multi to be used for training and practice in naso-tracheal intubation and nasally directed fiberoptic examination.

The AirSim Multi can be used in the training of all the procedures facilitated by the AirSim Standard with the addition of:

- Naso-tracheal intubation
- Awake fiberoptic examination
- Bag & mask ventilation techniques

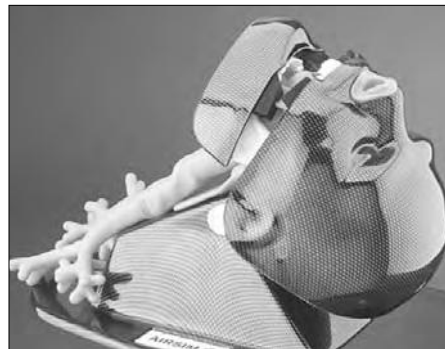
Trucorp recommend the following equipment sizes for optimal performance:

- 7.0-7.5 mm ID for nasal intubation
- 8.0-9.0 mm ID for oral intubation
- Size 3 and 4 for LMA laryngeal masks
(similar respective sizes for other supraglottic devices)

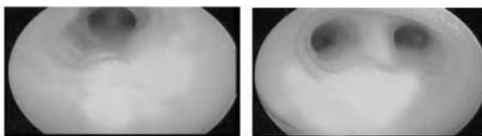
AirSim Bronchi

The AirSim Bronchi is the latest product addition to the AirSim family, providing anatomically correct detail down to the fourth generation bronchi.

The AirSim Bronchi provides exceptional detail in both internal and external features; made possible through a combination of cutting edge moulding technology and carefully handcrafted processes.



Internal view of the AirSim Bronchi



AirSim Bronchi	#EU-AA51100	Nasal Passage, Chin
AirSim Bronchi	#EU-AA51101	Nasal Passage, Chin, Breakout Teeth
AirSim Bronchi	#EU-AA51110	Nasal Passage, Chin, Needle Access
AirSim Bronchi	#EU-AA51111	Nasal Passage, Chin, Needle Access, Breakout Teeth

The AirSim Bronchi unit will provide a solution to your training needs in:

Diagnostic bronchoscopy
Lung isolation techniques using left and right endobronchial tubes and bronchial blockers
Lung suctioning techniques

For clinicians and industrial clients, the AirSim Bronchi is a leading choice for demonstration of items such as:

- Fiberoptic bronchoscopic equipment
- Single and double lumen tubes and bronchial blockers
- Specialized bronchial stents

The AirSim Bronchi can also be used in a similar manner to the AirSim Multi and can cover an extensive range of training requirements.

- 7.0-7.5 mm ID for nasal intubation
- 8.0-9.0 mm ID for oral intubation
- Size 3 and 4 for LMA laryngeal masks
(similar respective sizes for other supraglottic devices)

Trucorp recommend the following equipment sizes for optimal performance:

- 7.0-7.5 mm ID for nasal intubation
- 8.0-9.0 mm ID for oral intubation
- Size 3 and 4 for LMA laryngeal masks
(similar respective sizes for other supraglottic devices)
- Size 35F - 37F for endobronchial tubes