

Resuscitators

MERCURY[®] AIRWAY MANAGEMENT SYSTEM

ESPECIALLY DESIGNED TO SAVE TIME AND LIVES



Quality Features:

- Translucent Single-Unit Valve Construction
- Low Resistance, One-Way Duck Bill Valve built close to patient port
- Low Dead Space, 7ml all sizes
- Optional Reservoir Bag or Flexible Tubing reservoir system is available for higher oxygen concentrations
- Single-Patient Use
- 360° Patient Swivel Connection
- No Assembly Necessary
- 360° Two-Way Swivel Action Patient Valve with Manometer Port and Adapter Port.
- No Latex Proteins
- Meets or Exceeds ISO Standard 10651-4
- Independent Testing Performed by Leading Institutions

Benefits:

- Allows for observation of obstructions
- Fast re-expansion/high breath per minute capability
- Allows for monitoring of airway and PEEP pressure
- Allows for peep valve, filter or manometer options
- Ready-to-use
- Cost-efficient

**LATEX
FREE**

**LATEX
FREE**

**LATEX
FREE**

**LATEX
FREE**



S
A
F
E
T
Y

Q
U
A
L
I
T
Y

ADULT

For Patients Over 20 kgs

Maximum Rate:	92 BPM		
Maximum Volume:	900 ml		
Pressure Relief Valve:	none		
Oxygen Concentration:			
LPM	3	5	10
Rate	12	12	12
Tidal Volume:	500 ml	500ml	500ml
W/Reservoir:	68%	95%	100%
W/O Reservoir:	34%	47%	70%
Measured Volume:			
Bag	1600 ml		
Reservoir	2600 ml		

CHILD

For Patients Between 10 and 20 kgs

Maximum Rate:	168 BPM
Maximum Volume:	360 ml
Pressure Relief Valve:	42+/-5 cm H ₂ O (Nominal)
Oxygen Concentration:	
LPM	10
Rate	20
Tidal Volume:	250 ml
W/Reservoir:	100%
W/O Reservoir:	70%
Measured Volume:	
Bag	500 ml
Reservoir	2600 ml

INFANT

For Patients Under <10 kgs

Maximum Rate:	180+ BPM
Maximum Volume:	175 ml
Pressure Relief Valve:	42+/-5 cm H ₂ O (Nominal)
Oxygen Concentration:	
LPM	4
Rate	30
Tidal Volume:	40 ml
W/Reservoir:	100%
W/O Reservoir:	85%
Measured Volume:	
Bag	240 ml
Reservoir	600 ml

SMALL ADULT

For Patients Over 30 kgs

Maximum Rate:	110 BPM		
Maximum Volume:	500 - 750 ml		
Pressure Relief Valve:	(optional)		
Oxygen Concentration:			
LPM	3	5	10
Rate	12	12	12
Tidal Volume:	500 ml	500ml	500ml
W/Reservoir:	68%	95%	100%
W/O Reservoir:	34%	47%	70%
Measured Volume:			
Bag	1000 ml		
Reservoir	2600 ml		

Resuscitators

DISPOSABLE



MERCURY® CPR BAG - 6/CASE

MERCURY® Adult CPR BAG with OMNI-LINK®

- #10-55028** Adult Bag with OMNI-LINK, less mask, with O₂ reservoir, and O₂ tubing, 6/BX
- #10-55027** Adult Bag with OMNI-LINK, anatomical mask, O₂ reservoir, and O₂ tubing, 6/BX

MERCURY® Infant CPR BAG with Manometer

- #10-55283** Infant CPR Bag with cushion mask, aerosol reservoir, lock clip, and Pressure Manometer 6/BX
- #10-55284** Infant CPR Bag with cushion mask, O₂ reservoir, lock clip and Pressure Manometer 6/BX

- #10-55003** Adult Bag, Less Mask, with O₂ reservoir, and O₂ tubing, 6/BX
- #10-55004** Adult Bag, anatomical mask, O₂ reservoir, and O₂ tubing, 6/BX
- #10-55103** Child Bag, Less Mask, with O₂ reservoir, lock clip and O₂ tubing, 6/BX
- #10-55104** Child Bag, anatomical mask, O₂ reservoir, lock clip and O₂ tubing, 6/BX
- #10-55203** Infant Bag, less mask, O₂ reservoir, lock clip and O₂ tubing, 6/BX
- #10-55204** Infant Bag, anatomical mask, O₂ reservoir, lock clip and O₂ tubing, 6/BX

Please contact our Customer Service Department to receive a copy of Mercury Medical's "Resuscitation Systems Brochure."

Ask about our Custom Configurations.
10 case minimum on all custom configuration orders.

DISCONNECT WEDGE



Mercury Medical's Disconnect Wedge provides quick and easy disconnects for most 15mm connections on endotracheal tubes. Now connections can be made snug, reducing accidental extubations and patient trauma when they are wedge-disconnected.

Item Number	Description	
#10-55340	Disconnect Wedge	50/BX

Resuscitators/Accessories

CPR HAND RESUSCITATOR ACCESSORIES

NOW Color-Coded

Color-Coded Manometer:
green 0-20 cm H₂O, yellow between 20-40 cm H₂O and red over 40 cm H₂O.



0-60 cm H₂O shown

MANOMETER

The Mercury Medical Disposable Pressure Manometer is the first disposable manometer to reliably monitor BOTH proper inflation pressure and PEEP pressure during manual ventilation with Mercury's CPR and Hyperinflation Systems. And now the Mercury Medical Disposable Pressure Manometer is available with a color-coded label for improved visibility of pressure ranges.

Item No.	Description
#10-553-50	Manometer 0-60cm H ₂ O - 20/Box
#10-553-51	Manometer 0-60cm H ₂ O w/Stand & Tubing - 12/Box
#10-553-52	Manometer 0-40cm H ₂ O - 20/Box
#10-553-53	In-Line Manometer w/ Tee 0-40cm H ₂ O Left Orientation - 20/Box
#10-553-54	In-Line Manometer w/ Tee 0-40cm H ₂ O Right Orientation - 20/Box
#10-553-56	In-Line Manometer w/ Tee 0-60cm H ₂ O Left Orientation - 20/Box
#10-553-57	In-Line Manometer w/ Tee 0-60cm H ₂ O Right Orientation - 20/Box

Patent # US 5,557,049 B1



BACTERIAL & VIRAL FILTER

The Bacterial Filter provides Bacterial Filtration Efficiency (B.F.E.) of 99.9%. The Filter utilizes three methods of filtration:

1. Multilayered Media
2. Electrostatic Attraction
3. Impaction

Item Number	Description	
#10-55375	Bacterial and Viral Filter 30mm O.D. x 30mm I.D.	20/Box



PEEP VALVE

The PEEP Valve works by applying an internal gas pressure to hold the alveolus open throughout inspiration and expiration. This internal pressure aids in the prevention of atelectasis and associated shunt conditions.¹

Features:

- Built-in damping mechanism
- 30mm female fitting

Benefits:

- Reduces noise
- Conforms to ISO inlet standards

#10-55330 PEEP w/22mm Adapter 12/Box

1. Reference: Roger C. Bone, David H. Eubanks, Comprehensive Respiratory Care. The C.V. Mosby Co., St. Louis. 1990;23:684.



Use an MR system with a static magnetic field of 1.5 Tesla or less.
Use an MR system with a spatial gradient of 450 gauss/cm or less.



OMNI-LINK®

Omni-Link® Features:

- Flexible corrugated tubing
- Available In 6" And 12" segments that can be interconnected

Benefits:

- Absorbs movement
- Provides greater versatility and longer reach capabilities
- Reduces arm fatigue and airway trauma
- Helps to avoid accidental disconnects and extubations

Item Number	Description		
#10-55360	OMNI-LINK 12" Length	50/Box	
#10-55361	OMNI-LINK 6" Length	25/Box	

Resuscitators

Laerdal® Silicone Resuscitators

The latest from the leader in reusable resuscitators for nearly 40 years, the Laerdal Silicone Resuscitator has exceptional bag re-expansion and superior feel for lung compliance. The improved design enhances its convenience and maintains the outstanding quality and economy healthcare professionals rely on. All the excellence and integrity of the original!

Preferred by healthcare providers for excellent performance, economy and reliability. Laerdal Silicone Resuscitators have proven to be the perennial gold standard by which other resuscitators are measured.

Adult Resuscitator Models

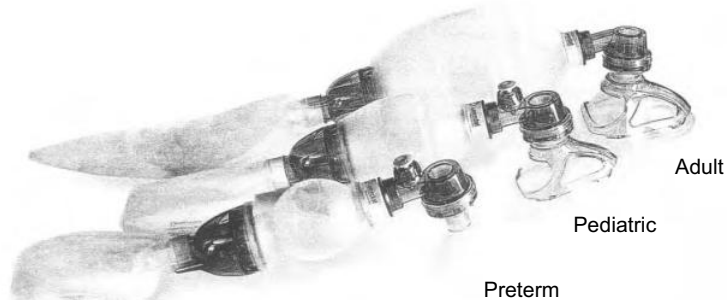
- #07-87005033 Adult Basic w/o Mask in Carton
- #07-87005233 Adult Standard w/Adult Mask 4-5+ in Carton
- #07-87005133 Adult, Complete in Carton
- #07-87005333 Adult, Complete in Compact Case
- #07-87005533 Adult, Complete in Display Case

Pediatric Resuscitator Models

- #07-86005033 Child Basic w/o Mask in Carton
- #07-86005233 Standard Child w/Child Mask 3-4 in Carton
- #07-86005133 Child, Complete in Carton
- #07-86005333 Child, Complete in Compact Case
- #07-86005533 Child, Complete in Display Case
- #07-86005633 Child Term-Baby w/Infant Mask 0/1 in Carton

Preterm Resuscitator Models

- #07-85005033 Preterm Basic w/o Mask in Carton
- #07-85005133 Preterm, Complete in Carton
- #07-85005333 Preterm, Complete in Compact Case
- #07-85005533 Preterm, Complete in Display Case

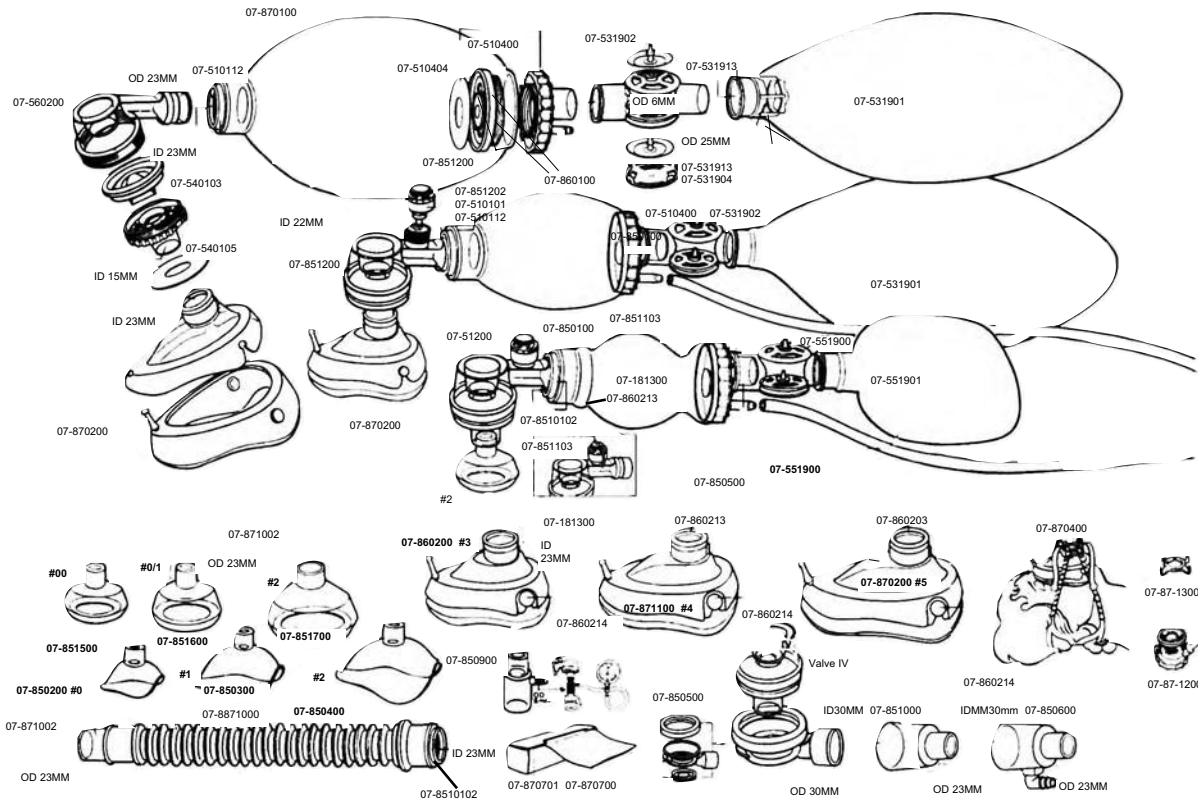


Accessories

- #07-521100 Wall Mount for Display Case Preterm/Pediatric
- #07-572000 Wall Mount for Display Case — Adult
- #07-871000 Silicone Extension Tube (28 cm)
- #07-870550 Wall Poster (Assembly Guide)
- #07-870120 Hanging Loop
- #07-870400 Laerdal Head Strap w/Attachment Ring
- #07-531901 O₂ Reservoir Bag — 2600 ml
- #07-551901 O₂ Reservoir Bag — 600 ml
- #07-850900 Manometer Connector
- #07-87540033 Intake Reservoir Valve
- #07-560200 Patient Valve
- #07-851250 Patient Valve w/35 cm H₂O Pressure Relief Valve
- #07-851350 Patient Valve w/35 cm H₂O Pressure Relief Valve & Lock Clip
- #07-531907 LSR Intake Valve Adapter (23 mm OD)

	ADULT (Patients over 25 kg/55 lb)			CHILD (Patients 2.5 to 25 kg)		PRETERM (Patients under 2.5 kg/5.5 lb)	
	Basic w/o Mask	Standard	Complete	Basic w/o Mask	Complete	Basic w/o Mask	Complete
Carton	#07-87005033	#07-87005233	#07-87005133	#07-86005033	#07-86005133	#07-85005033	#07-85005133
Compact Case			#07-87005333		#07-86005333		#07-85005333
Display Case			#07-87005533		#07-86005533		#07-85005533
Bag							
1600 ml	●	●					
500 ml				●	●		
240 ml						●	●
Pt Valve w/o Relief Valve	●	●					
w/ Relief Valve				●	●	●	●
Mask							
0/0							●
0/1					●		●
2					●		
3-4 w/Mask Cover			●		●		
4-5+ w/Mask Cover		●	●				
Intake/Reservoir Valve	●	●	●	●	●	●	●
Reservoir Bag	●	●	●				
2600 ml				●	●	●	●
600 ml				●	●	●	●
DFU	●	●	●	●	●	●	●

Resuscitators/Laerdal



#07-870500 Wall Poster Reassembly Guide

Accessories

Masks

#07-851500	Silicone mask, #00
#07-851600	Silicone mask, #0/1
#07-851700	Silicone mask, #2
#07-860200	Silicone child mask, #3
#07-860201	Cuff, mask, #3
#07-860202	Dome mask, #3
#07-860203	Dome bushing
#07-860204	Cuff button
#07-860205	Cuff tab
#07-871100	Silicone adult mask, #4
#07-867110	Cuff mask, #4
#07-851102	Dome mask, #4
#07-870200	Silicone adult mask, #5
#07-870201	Cuff mask, #5
#07-870202	Dome mask, #5

Patient Valves

#07-560200	Non-rebreathing valve
#07-560201	Upper valve housing
#07-540101	Valve housing, patient side
#07-540103	Lip valve
#07-540104	Disk membrane
#07-851200	Non-rebreathing valve w/pressure reg.
#07-851203	Upper part of valve w/regulator
#07-851202	Pressure regulator

Resuscitators/Nellcor Puritan Bennett

PMR 2 Manual Resuscitator

The PMR 2 Resuscitator is a portable, manually powered, resuscitator designed for emergency lung ventilation. Three different systems for administering supplemental oxygen are also available. A special oxygen supply valve designed expressly for the PMR 2 can deliver oxygen concentrations of 100%. An oxygen accumulator accessory provides nominal concentrations up to 95%. A direct feed small bore tube supplies nominal concentrations up to 50%. Two storage cases with optional hanging brackets are available. An optional PEEP accessory helps restore and maintain pressure in the airway during procedures requiring ventilator disconnect and resuscitation. An airway pressure gauge, which can be attached directly to the ventilator support arm, is available to monitor patient airway pressure and to calibrate the PEEP accessory.

Features:

- One-way valve with 40± 5 cm H₂O pop-off with override available for both adult and child application.
- Unique oxygen supply valve delivers concentration up to 100%.
- Rugged carrying cases designed for immediate accessibility of PMR 2.
- Complete line of accessories.
- Resuscitators and accessories autoclavable.

ITEM NUMBER

- #06-153015 PMR 2, Infant with pressure relief, swivel & pressure port.
- #06-153013 PMR 2, child, with pressure relief valve.
- #06-153014 PMR 2, child, w/o pressure relief valve.
- #06-153011 PMR 2, adult, with pressure relief valve.
- #06-153012 PMR 2, child, w/o pressure relief valve.



Replacement Parts

- #06-230472 Small case
- #06-230473 Large case
- #06-231077 Cap (no pressure relief)
- #06-231136 Cap (pressure relief)
- #06-290536 Non-rebreathing valve assembly. (1 pressure port cap).
- #06-616078 Cage
- #06-616408 PG Pressure port cap (10Pkg)
- #06-622550 O-Ring
- #06-631005 Diaphragm

Reusable PEEP Valve #06-133179

PMR 2 peep valve helps restore and maintain pressure in the airway during procedures requiring ventilator disconnect and ventilation.



#06-133179

