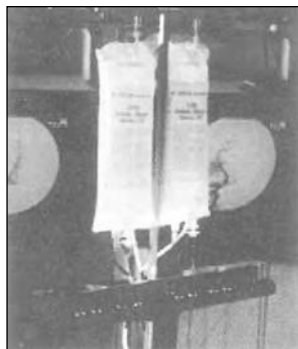


IV Illuminators



#DS-IVILLUM0100



#DS-IVILLUM0600

Model Specifications

- Totally Portable/Ambulatory
- Battery Powered NIMH (rechargeable)
- Solid State High Bright White LED lighting technology
- Long Life (average 8 hours per charge cycle)
- Lightweight
- Compact Size: 15 in. x 4 in. x 3 in.
- Rugged aluminum construction with heavy duty Epoxy powder coated surface
- Splash proof
- Attaches to any surface
- No IV Pole required — Mounts to any IV pole
- Adjusts in height to accommodate 1000ml - 100ml IV bags
- Custom carrying case, Medical grade "smart trickle charger", rechargeable battery pack are all included.

The IV Illuminator systems provide a clear, illuminated, pinpoint monitoring of the IV drip chamber, pressure bag and tubing during infusions. The "lighted monitoring feature" allows medical personnel in assuring that all IV solutions and medications are infusing properly and at the correct infusion rate. The IV Illuminators greatly enhance patient safety in aiding to prevent any adverse events with the infusion in to a patient.

- #DS-IVILLUM0100
- #DS-IVILLUM0200
- #DS-IVILLUM0600
- #DS-IVLTBR2STUMC
- #DS-IVPL06ST48TC001

Pole Holder

- Table-top
- 24 inch pole holder
- Base assembly



- IV Portable "Firefly" Illuminator
- IV Illuminator 2-Position
- IV Illuminator 6-Position
- IV Illuminator Light Bar
- IV Pole Assy 48" 6/Position

Universal Mounting Assembly

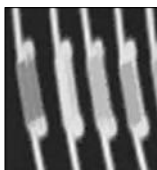


The IV Illuminators are available in models which are employed in operating theaters, radiology suites, cardiac cath-labs, PV surgical, ultrasonic surgery, embolization procedures, electro-surgery, coiling of aneurysms procedures, infusion therapy, angiography-angiograms.

The company also has models that are designed for use in the following areas — ER rooms, patient rooms, recovery rooms, ambulatory-EMT Paramedic, military field, home use/nursing, pharmacy, medical carts, tables and IV poles.

- 24"-28" solid aluminum IV pole with cross bar to hold up to six IV solution bags.
- Easily attaches to procedure tables, standard IV poles and is available in "desk top" models with the use of a mounting base assembly (#DS-TT-24IV-BA). Note: Use of base assembly is to be used with a 24 inch IV pole only.
- Waterproof IV light-bar.
- Operates on a low profile, hospital grade AC/DC power supply.
- Optional color light beam lenses to distinguish various drip lines.
- State of the art solid state light source.

- Totally Portable/Ambulatory
- Disposable
- Non-toxic
- Non-heat generating "cold light"
- Long Life (average 10 hours illuminated life)
- Lightweight
- Compact Size: 1 in. x 1/4 in. x 1/4 in.
- Clip on to IV pole
- Quick access in any medical setting



The small retention clip harnesses the light stick **permanently** to standard IV lines, (anywhere along the line) without impeding the flow of medications/solutions in the IV line.

The inherent feature of being able to clearly and instantly, identifying lines with "color coded illumination" greatly aids in assuring/promoting safety in any environment where infusions are administered to patients.

The "light sticks" are non-toxic and emit cold light.

Visible emitted light life from the small device is well over ten hours!

The Flush-Lite™ product line is available in convenient to use blister packs consisting of six custom retention clips, med-labels and light sticks.

Product Line

The product line of IV Illuminators was designed to address the recognized need of assuring patient safety and promoting efficacy with the delivery of IV medications in normal to low-light settings.

Embo-Optics, LLC is the ONLY source worldwide, in providing lighting solutions for the purposes of monitoring IV infusions in all medical environments.

The new products were designed to address the need for identification of critical IV lines via illumination in low to normal ambient light level environments.

The identification feature is provided via the means of attaching a small, illuminated cyalume technology colored (8 available colors) light stick to an IV line. Attachment is achieved with the use of a custom, clear retention plastic clip.

#DS-IVIDCODEBLUE	Flush Lite IV Lite Stick	25/Box
#DS-IVIDCODEGREEN	Flush Lite IV Lite Stick	25/Box
#DS-IVIDCODEORANGE	Flush Lite IV Lite Stick	25/Box
#DS-IVIDCODEPINK	Flush Lite IV Lite Stick	25/Box
#DS-IVIDCODEPURPLE	Flush Lite IV Lite Stick	25/Box
#DS-IVIDCODERED	Flush Lite IV Lite Stick	25/Box
#DS-IVIDCODEWHITE	Flush Lite IV Lite Stick	25/Box
#DS-IVIDCODEYELLOW	Flush Lite IV Lite Stick	25/Box